

# Quality Assurance Efforts in New York State Newborn Hearing Screening

Candace Adams Grossjohann, PhD  
Brenda Knudson Chouffi, Ms Ed.



# Road Map to Quality Assurance Practices

Where We Began  
And  
Where We Are Going



# NYS Newborn Hearing Screening (NBHS)

In 2008:

247,882 discharges from 144 facilities  
facility range from 71 to over 7000

98.67% Screened Prior to Discharge

99.32% Screened Birth to One Month

80.85% Returned Post Discharge

# The Beginning With NICHQ

- Participated in NBHS NICHQ Collaborative with Montefiore Medical Center, New York City Early Intervention Program and NYC Parents in 2008-09
- Plan Do Study Act Cycles(PDSAs)
- Review the data collected

# Beginning the QA Process

- Identified initiatives and best practices
- Identified hospitals that did not meet benchmarks
- Identified methods of providing technical assistance to identified hospitals

# QA Data Dissemination

## Letters to Hospitals

- Hospitals provided with individual data reports comparing their facility to Statewide and National benchmarks
- Three versions of the letters
- Direct 1:1 technical assistance provided
- Preparing for round two of data feedback (2008 Data)

# On the Road with QA

## Hospital Site Visits

- Site visits performed this past year
  - Upstate rural
  - Downstate urban/suburban
  - Mix of high/low performers
- Practices varied greatly between facilities
- Communities often made an impact on results
- Telephone conferences conducted for focused technical assistance



# QA Toolkit

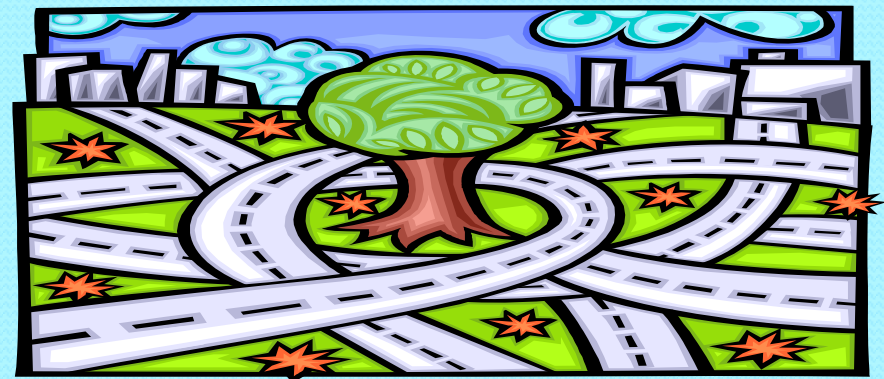
- Privacy Issues
- Data Sharing
- JCIH Recommendations
- Letter describing screening procedures and referrals to EI/ChildFind
- NBHS Publications
- NBHS Regulations
- NBHS Guidance Document





# Parent Support Initiatives

- Parent Roadmap
- NYS Find Out More! Brochure
- Expanding Support to Families



# Data Trends Over Time

Improvements in data that could be related to QA efforts in 2009 and will not be seen until 2010 data is submitted...so stay tuned!



	2006 %	2007 %	2008 %
Screen prior to Discharge	97.92%	98.49%	98.67%
Screen B-1 Month	99.06%	99.25%	99.33%
Return Post Discharge	71.61%	77.42%	80.52%



# NYS NBHS A Decade in Review

10 years...it's time for change

- Regulations
- Legislation
- Additional QA Activities